

May &
June
2018



Manure Spreader

Stow Community Garden Newsletter

Welcome to the Stow Community Garden Newsletter

The Manure Spreader . A special welcome to all the new gardeners!

Garden Information will be distributed to you through:

- ✂ The Manure Spreader Garden Newsletter emailed to you.
- ✂ Scarecrow Garden Sign near the Garden entrance
- ✂ Email Blasts Announcements that are time-sensitive or especially important are sent by an email “blast” directly to all current gardeners.

Visit the City of Stow website at:

<http://stowohio.org/funinstow/community-garden-program/>

✂ Attend Garden Committee Meetings (See dates listed inside)

✂ Bulletin Boards on the Garden Shed

Check the boards frequently to stay informed.

A detailed diagram of the garden and its numbered plots

A list of registered gardeners and their plot numbers

A copy of the Community Garden Rules

The most recent copy of the garden newsletter, *The Manure Spreader*

Any additional Important Garden Announcements



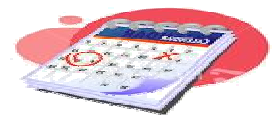
Community Garden Shed



Inside this issue:

Dates to Remember	1
Important Dates	1
Mason Bees	2
Garden Safety	3
Watch Out: Ticks	4
Stow Community Garden Rules	5
Garden Contacts Volunteer Help	6

IMPORTANT DATES - Stow Community Garden 2018



Start of Season: Usually just after Memorial Day with tractor plowing of field (dependent on weather conditions), placement of stakes for paths & garden plots & labeled with numbers by the garden volunteers
WAIT until ALL the plots have been staked and numbered before entering the garden.

A NOTICE WILL BE POSTED AT THE GARDEN SHED & AN EMAIL NOTICE WILL BE SENT TO GARDENERS WHEN THE GARDEN IS READY FOR PLANTING.

Seed & Seedling Swap (Trade Your extras with others) Saturday, June 9th 9:00am - 12:00pm

Planting Deadline: Garden Plots must be planted by Friday, June 15, 2018

End of Season: All produce must be harvested & materials removed by: Friday, September 28, 2018

Community Garden Planning Meetings are open to all current Community Gardeners.

A core group of gardeners volunteer countless hours of their time and energy trying to ensure your garden experience is positive.

Your participation is not only welcome but is crucial to the garden's continued future.

The Stow Community Garden is truly run by the volunteers.

Additional help from new volunteers is always needed. *We hope you will join us.*



Garden planning meetings are open to all registered gardeners. They are an opportunity to share ideas, make constructive suggestions, participate in decision making and volunteer with garden activities.

Meetings are held on the second Tuesday of each month:

June 12, July 10, August 14, September 11, October 9 at 10:00am at Stow City Hall 3760 Darrow Road.



NEW ADDITIONS TO OUR COMMUNITY GARDEN MASON BEE HOUSES AND POLLINATOR GARDENS

Some bees nest underground while others drill holes and destroy wooden items. Mason bees use holes that are already available in wood.

Native mason bees can be further protected from pests, diseases and predators by providing bee houses with holes for nesting and a place to raise young bees.



Pollination (moving pollen from a male flower to a female flower) is an essential step in the production of many food crops. Bees rely on flower nectar and pollen to feed their young. A significant decline in the numbers of pollinators in recent years has been linked to pests, pathogens, lack of flowers, pesticide use, climate change and a shortage of suitable nesting sites.

The female mason bee is one of nature's best pollinators. She collects pollen and nectar from flowers. She then finds a hole in some wood and crawls inside to deposit her collection and lay an egg. Unlike some bees and insects, mason bees are not destructive or aggressive. The name "mason" bee refers to the way they use mud to encase and separate each of their eggs into protective chambers.

Male mason bees live only a few days after mating. They do not sting. Female mason bees rarely sting and only when they are being threatened.

HOW CAN GARDENERS HELP?

Grow more flowers, especially ones that attract pollinators.

(sunflowers, marigolds, zinnias, cosmos, joe pye weed, rudbekia, purple coneflower)

Provide nesting sites and a source of mud and water for mason bees and other pollinators.

Avoid using pesticides

TO LEARN MORE:

<https://www.buzzaboutbees.net/mason-bees.html>

<http://u.osu.edu/beelab/gardening-for-bees/>

beediverse.com

<https://xerces.org/bees/>

GARDEN SAFETY

Safety is mostly common sense but sometimes it's useful to review.

- Sun protection: sunscreen, sunglasses, hat
- Use mosquito repellent, especially in the evening
- Wear garden gloves.
- Keep upwind of dust, sprays. If you can smell it, you're breathing it into your lungs.
- Drink plenty of fluids
- Pace yourself. Take breaks, seek shade, and enjoy your surroundings.
- Many sharp pieces of trash can be found in the garden. It is not a safe place to go barefoot.
- Make certain that your tetanus immunization is current.
- Keep a charged cell phone with you in case you need to call for help.
- Keep copies of your photo ID, health ins. info., list of major diagnoses, allergies, and current meds in the glove compartment of your car.
- Keep a first aid kit in your car.
- Closely supervise children when they visit the garden. Most accidents are preventable.
- The parking areas are especially dangerous for children. Don't allow them to race around or play there. It is very difficult for drivers so see small children.
- Teach children to walk on the garden paths and not to enter another person's plot unless they are invited. Do not allow children to pick another person's vegetables or flowers.
- Leave the garden immediately and seek shelter if there is lightening or thunder.
- Poison ivy grows in the weedy areas adjacent to the gardens. Scrub with Fels Naphtha soap ASAP if you suspect contact.
- Watch your footing carefully, especially in the composting areas to avoid sprained ankles.
- Wash hands with soap and water at the end of your visit to the garden.



Remember to check yourself for ticks. (See Article on Tick Safety)

HEALTH WARNING



TICKS are on the rise



AVOIDING TICKS

- Stay out of weedy, tick-infested areas.
- Make frequent personal inspections.
- Examine children at least twice daily. Pay special attention to the head and neck.
- Check clothing for crawling ticks.
- Keep dogs tied or penned in a mowed area as they may bring ticks into the home or yard.
- Check them daily. If ticks are found, follow tick removal instructions.
- If exposure to a tick-infested area is unavoidable, tuck pant cuffs into socks or boots.
- Wearing light-colored clothing makes it easier to find crawling ticks.

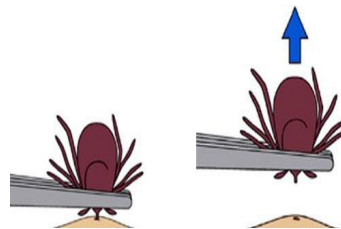
HOW TO REMOVE A TICK



If a tick is attached to you or your pet, remove it as soon as possible but there's no need to panic.

- Use fine-tip tweezers to grasp the tick as close to the skin's surface as possible.
- Pull upward with a steady, even pull. Don't twist or jerk the tick. This can cause the mouth-parts to break off and remain in the skin. If this happens, remove the mouth-parts with tweezers. If the mouth parts are unable to be removed easily, leave them alone and let the skin heal.
- After removing the tick, thoroughly clean the bite area and your hands with rubbing alcohol, an iodine scrub, or soap and water.
- Dispose of a live tick by submersing it in alcohol, placing it in a sealed bag/container, wrapping it tightly in tape, or flushing it down the toilet. Never touch or crush a tick with your bare fingers. Infected tick body fluids that come into contact with broken skin, the mouth or eyes can cause disease.
- Avoid folklore remedies like "painting" the tick with nail polish or petroleum jelly or touching the tick with a hot match or cigarette

The goal is to remove the tick as soon as possible—not to wait for it to detach.



Follow-up

If you develop a rash or fever within several weeks of removing a tick, see your doctor. Be sure to tell the doctor about your recent tick bite, when the bite occurred, and where you most likely acquired the tick.

For more information, or for help identifying a tick contact the experts at the:
Summit County Public Health Department at [\(330\) 926-5600](tel:3309265600)

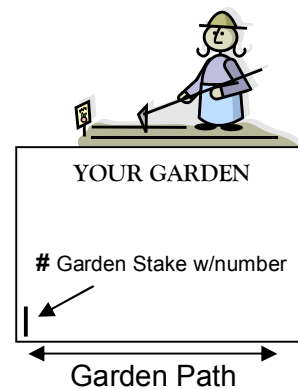
Useful References:

- <https://www.scph.org/pest-control/tick-control>
- <https://www.cdc.gov/ticks>
- https://www.cdc.gov/ticks/removing_a_tick.html

2018 Stow Community Garden Rules & Maintenance

Planting-Start of Season: Gardens are normally ready for planting around Memorial Day. DO NOT Plant prior to gardens being staked with plot numbers. (Weather dependent)
Gardens planted before plot numbering is complete or those using unassigned plots are subject to loss of plot.

Locating Your Garden: Gardener's Name / Plot #'s are listed at Garden Shed
IT IS VERY IMPORTANT THAT YOU ARE ON
THE PATH (4' wide) TO LOCATE YOUR NUMBERED STAKE.



Your garden is to the RIGHT of your numbered stake in the lower left corner of your garden plot.

Garden Plots not planted by Fri., June 15th, 2018 will be forfeited without refund & re-assigned.

Unworked Plots: If you are on vacation or ill ask other Gardeners to water, weed and harvest for you.

Water Use: Water spigots are available at the garden. Gardeners must be at the garden site at all times when watering. - Do NOT let water run openly without need. There is an expense associated with water used in the gardens. We ask that Gardeners practice water conservation.

Garden Hoses: Hoses are not provided by the Stow Community Garden but are donated by other gardeners. Note: Gardeners using a watering can or jug have priority to the water supply. Most gardeners who use garden hoses attach a "Y" connection with a cutoff valve between the water spigot and their hose so others may use the spigot without interruption. *Hoses may not be removed from the attached water spigots - Do Not leave a hose in the aisles; after each use please recoil the hose at the spigot for the next user.*

Plastic Ground Cover, Plastic Tape, Fishing Line, Wire Fencing, Styrofoam - Are Not Permitted in garden plots. If found; these materials will be removed. These materials have broken equipment when mowing & plowing and or are not biodegradable. Recommended alternatives: Wood Chips, grass clippings, straw, paper. Fabric type ribbon, string, rope or cloth strips may be used to mark plot.

YOU must remove all materials you place in garden at the end of season. The Stow Community Garden Association & Stow Parks & Recreation Department are not responsible for materials used in the gardens.

Mesh fencing, if utilized, must be staked on the inside of garden plot so as not to sag in to the aisle.

Gardening Hours: The Stow Community Garden is located within a Stow City Park and thus gardeners must follow all City of Stow and Stow Park Ordinances. Parks including the gardens are open from *Dawn to Dusk*. You may not be in the gardens after dark.

Dogs/Pets/Alcohol/Firearms: No Dogs, Pets, Alcohol, Drugs or Firearms are permitted in the gardens. PER CITY OF STOW PARK REGULATIONS (955.02) Smoking is not permitted in the garden.

Plantings: All garden plants should be contained within your plot. No stacking of plant materials. Tall plants should be planted in the center of your plot so as not to shade a garden neighbor's plot.

Weeds / Rocks / Debris should be placed in the designated areas, not in aisles or at water spigots. Each gardener is responsible for keeping their plot weed free and keeping the adjoining aisles clear. Use only natural or organic weed/animal deterrents. Round Up or chemical weed killers are NOT permitted.

Children are welcome in the garden, but must be supervised by an Adult at ALL Times.

Pilferage/Theft: Anyone caught stealing will be put out of the Community Garden Program & Stow Police will be contacted. Gardeners should attempt to become acquainted with other gardeners using the surrounding plots and help in protecting the gardens from theft or vandalism. If you are suspicious of behavior please take note and contact the Stow Parks & Recreation Department.

Harvest: Gardeners should pick their produce when ready, thereby avoiding tempting others. Only registered gardeners or their designee are permitted to harvest their garden plot.

End of Season: All Produce must be harvested from your plot by: Friday, September 28, 2018
You are required to remove All stakes, string, wire cages, etc. off your plot by this date.

Please **Do Not Remove the Plot # Stakes** that were installed by the Community Garden Association
The Stow Community Garden Planning Committee can amend the rules for the benefit of the Program.

In Registering for a garden plot you agree to abide by the Stow Community Garden Rules / Regulations.
Stow Parks & Recreation Department 330-689-5100

Stow Community Garden: Contact Information 2018

Stow Parks & Recreation Department
3760 Darrow Road (City Hall)
Stow, OH 44224
Phone: 330-689-5100

Website: [http://stowohio.org/funinstow/
community-garden-program/](http://stowohio.org/funinstow/community-garden-program/)

Stow Community Garden
Stow Parks & Recreation Contact:
Kathy McConnell - Recreation Supervisor
kmccconnell@stow.oh.us

Stow Community Garden Association
Karen DePalo - Chairperson Email: dpalok@aol.com
Lynette Holland - Chairperson

Garden Association Committee Members:

Joe Antonucci
Donna Campana
Rick Hertle
Genice Robinson
James Robinson
Mary Lou Rosinski
Becky Umbach Community Garden Newsletter Coordinator Email: ruohio@aol.com



Stow Community Garden: HELP IS NEEDED

Karen DePalo and Lynette Holland have volunteered countless hours for the past several years to ensure that the Stow Community Garden runs smoothly. They deserve our thanks for all their hard work.

They have decided it's time for someone else to take over the leadership role of the Stow Community Garden at the end of this season. Any registered gardener who has an interest should contact Kathy McConnell at Stow Parks and Recreation kmccconnell@stow.oh.us (330) 689-5100.



Many people have enjoyed the opportunity to use the Community Garden, especially for such a reasonable price. It has added to the quality of life in our community and has been a way for people with similar interests to meet one another.

The City of Stow helps the garden administratively and provides the water. But the overall organizing and running of the garden is completely dependent upon volunteers. The garden planning board meets monthly and is open to all registered gardeners. For many years the vast majority of the work needed to run the garden has fallen on the shoulders of a core group of about ten gardeners. This has become an increasing burden for those who have been willing to help. Continuing the garden program depends on the interest and participation of ALL those who use it. Without your support, the garden program will, unfortunately, not be able to continue next year. Let's not let that happen.